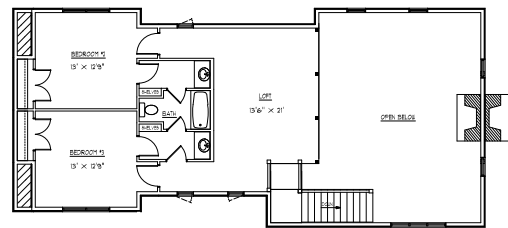


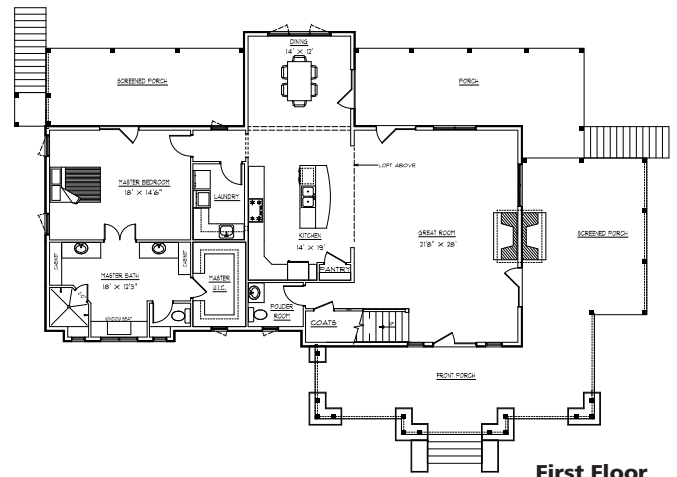


Mt. Mitchell
SQUARE FOOTAGE: 2,700
3 Bedrooms, 2 1/2 Baths

The Mt. Mitchell model is an ideal design for both indoor and outdoor living. It offers curb appeal with a variety of exterior finish options and porches on three sides. This Arts & Crafts style hybrid log home allows the homeowner to customize the look. Catch special moments in the private screened-in porch off the master. Relax by the fireplace on cool mountain nights in the second screened-in porch off the great room. Enjoy a large open kitchen that flows into the dining and great room area. Take advantage of the conveniently located laundry. The master, located on the first floor, offers a walk-in closet and oversized bath. The master bath features window seat, his and her sinks, private water closet, and a custom shower. The second level has an awesome loft overlooking the great room and two oversized bedrooms with a shared personalized bath. The views from inside are as spectacular as the views and architectural detail of the exterior. Whether this is a full time home or a getaway home, Landmark's MT. Mitchell model is adaptable for anyone.



Second Floor



First Floor

Landmark Log Homes
P.O. Box 4228
Frankfort KY 40601
502-875-1154
fax: 502-223-5035
e-mail: info@landmarkloghomes.com
www.landmarkloghomes.com

LANDMARK
LOG HOMES

Circle 019 on Reader Service Card for Free Information